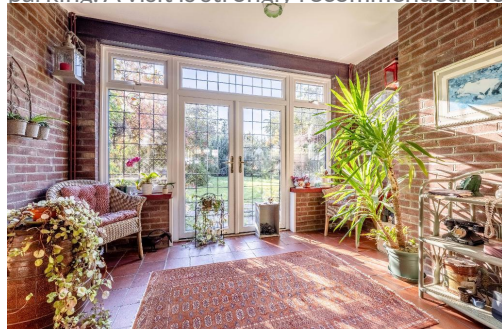


Key Features

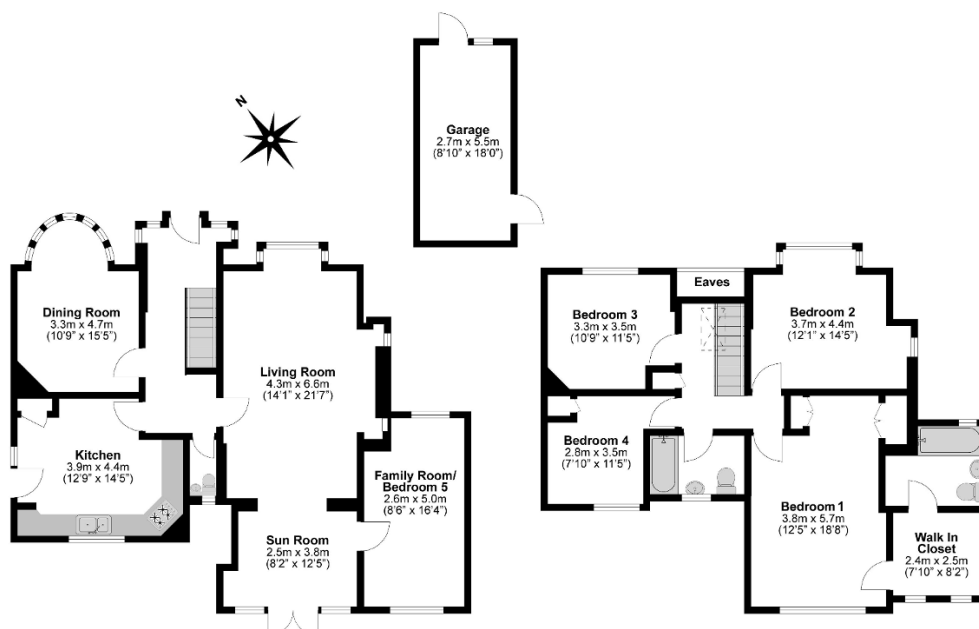
- 4 / 5 Bedrooms
- Dressing room
- 2 Bathrooms (one ensuite)
- 3 / 4 Reception rooms
- Fitted Kitchen
- Large level garden
- Driveway, ample parking
- Conveniently located

Description

**** SOLD STC **** On the market for the first time in many years ! Elsewhere are delighted to announce the availability of this impressive 1930's detached family home. The property is enviably located within a highly desirable residential road. This fine home has been well maintained and offers 4 / 5 Bedrooms, Dressing room, 2 Bathrooms (one ensuite), 3 / 4 reception rooms, plus a fitted Kitchen. There is ample scope to extend, subject to usual planning consents. In addition, the level rear garden is well established and offers a high degree of privacy ; provides access to the Richings Park Sports Club grounds, with tennis courts, a gym, and sports pitches. Gated driveway with ample parking. A visit is strongly recommended. No onward chain. **** IMMENSE RESPONSE -**



Total Approximate Floor Area
2174 Square feet
202 Square metres



**Illustrations are for identification purposes only,
measurements are approximate, not to scale.**