

Key Features

- Four double bedrooms, 1 with ensuite
- Spectacular detached family home
- Large frontage
- Subject of significant home improvements
- Spacious and Flexible accommodation
- No onward chain
- Planning permission granted
- Stunning kitchen & diner

Description

**** SOLD STC **** Elsewhere are delighted to market this stunning **FOUR BEDROOM FAMILY HOME**. Set behind double iron gates and with a large frontage, is this spectacular family home, subject of significant home improvements and is brought to the market to be sold with no onward chain.

In addition, planning permission has been granted for a front extension to add a two further ground floor rooms.

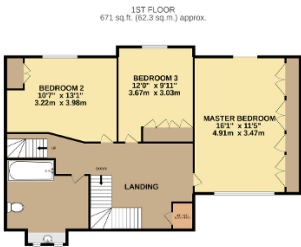
The existing ground floor includes a stunning kitchen and dining room with an attractive rear bay window. The kitchen features a new fitted Neff appliance and quartz worktop. The dining room includes an eye catching feature and there is a large garden.

Upstairs there is a master bedroom, two other bedrooms and a bathroom. The fitted bedrooms provide extra storage and a large walk in shower.

The second bedroom is a length bedroom, with a large garden, accompanied by a large garden.



BOOK YOUR VIEWING
SELL YOUR HOME



TOTAL FLOOR AREA : 1,799 sq.ft. (167.1 sq.m.) approx.

Whilst every attempt has been made to ensure the accuracy of the floorplan contained here, measurements of doors, windows, rooms and any other items are approximate and no responsibility is taken for any error, omission or mis-statement. This plan is for illustrative purposes only and should be used as such by any prospective purchaser. The services, systems and appliances shown have not been tested and no guarantee as to their operability or efficiency can be given.

Made with Mapbox ©2021