

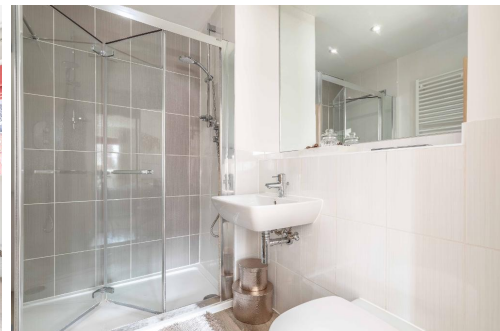
## Key Features

- 5 / 6 Bedrooms
- Ensuite Shower room
- Bathroom & Cloakroom
- 2 / 3 Reception rooms
- Fitted Kitchen
- Walking distance of schools
- No through road location
- NHBC warranty: 3 years remaining

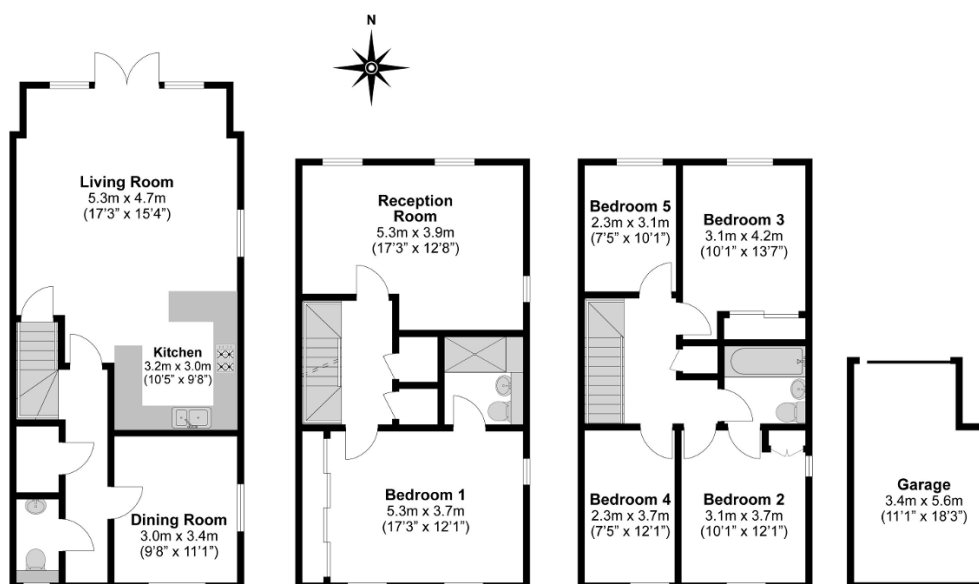
## Description

**\*\* SOLD STC \*\*** Elsewhere are delighted to offer this superbly presented 5 Bedroom Detached family home. Quietly located within a sought after no through road close to St Bernard's Grammar School and enjoying the benefit of open parkland within minutes walk of the house. There is also a garage and parking. The property was constructed by Linden Homes in 2014 and offers a spacious interior yet adaptable to suit individual needs. An early inspection is highly recommended.

CONTACT US TO VIEW or BOOK YOUR VIEWING 24/7 ON LINE  
[WWW.ELSE-WHERE.CO.UK](http://WWW.ELSE-WHERE.CO.UK)



**Total Approximate Floor Area**  
2045 Square feet  
190 Square metres



**Illustrations are for identification purposes only,  
measurements are approximate, not to scale.**