

Key Features

- Four Bedrooms
- Ensuite Shower room
- Bathroom & Cloakroom
- Private Rear Garden
- Spacious and Flexible accommodation
- Walking distance to local amenities
- Extended mid terrace
- Parking

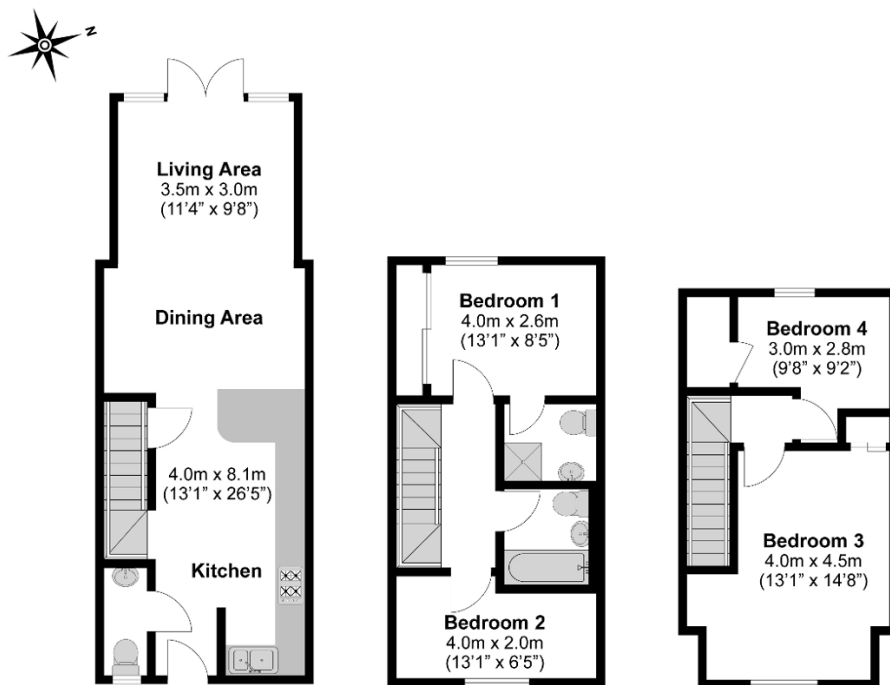
Description

**** SOLD STC **** Elsewhere are delighted to offer this impressive **FOUR BEDROOM** family home. This mid terrace house is situated close to well regarded schools and nearby amenities, making it an ideal home for growing families. Offering light and spacious accommodation throughout, The property further benefits from a well maintained rear garden and a ground floor rear extension. An early inspection is advised to avoid disappointment.

Book your viewing 24/7 via our website
sell your home for just £3000 inc VAT (no sale no fee)



Total Approximate Floor Area
1151 Square feet
107 Square metres



**Illustrations are for identification purposes only,
measurements are approximate, not to scale.**