



Key Features

- 5 Bedrooms
- Extended
- Block paved driveway
- Stunning
- French doors
- Excellent access to motorway links
- En-suite
- outstanding schools

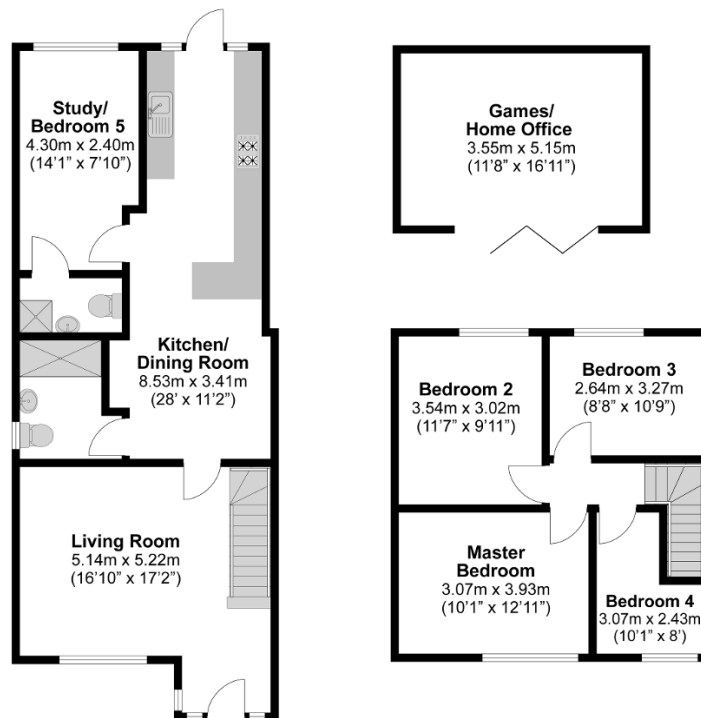
Description

Elsewhere are proud to bring to the market this STUNNING extended FIVE bedroom family home. Located only a few minutes drive away from slough town centre & train station (crossrail).

This property features include entrance hall, living room, kitchen/diner with french doors to the rear garden, bathroom, Bedroom 5 with en-suite, three double bedrooms & one single bedroom, block paved driveway with parking up to two cars this property is definitely worth a view!



Total Approximate Floor Area
1372.3 Square feet
127.5 Square metres



**Illustrations are for identification purposes only,
measurements are approximate, not to scale.**