

## Key Features

- 5 Bedrooms
- Ensuite shower room
- Bathroom
- Cloakroom /Shower room
- 19ft Living room
- 20ft Family room
- Well fitted 27ft Kitchen/ Dining area
- Ample parking, own driveway



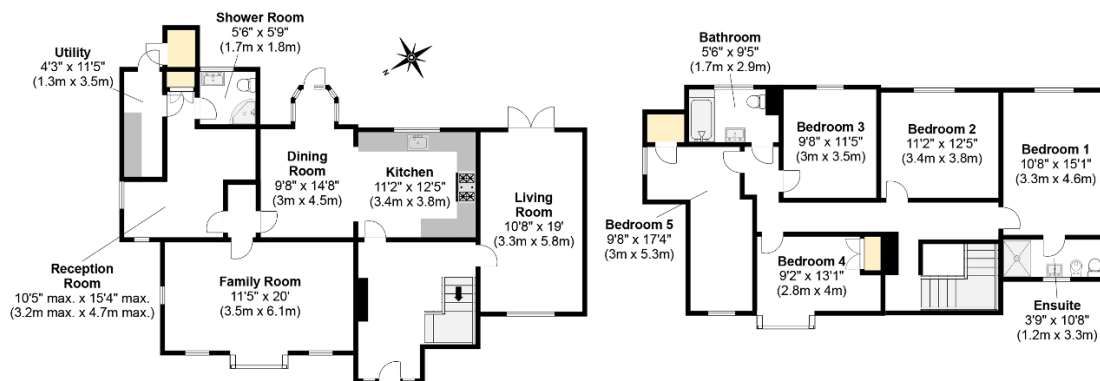
## Description

**\*\* SOLD STC \*\*** Elsewhere are delighted to announce the availability of this impressive 1930's detached family home. The property is enviably located within a highly desirable residential road. The current owners have maintained their home to a high standard and this fine home offers 5 bedrooms, 3 reception rooms, plus a large 27ft Kitchen/Dining room. In addition, the level rear garden offers a high degree of privacy and at the same time there is scope to extend, subject to usual planning consents. Gated driveway with ample parking. An inspection is strongly recommended. No onward chain.

CONTACT US TO VIEW or BOOK YOUR VIEWING 24/7 ONLINE



Total Approximate Floor Area  
2228 Square feet  
207 Square metres



Illustrations are for identification purposes only, measurements are approximate, not to scale.