



Key Features

- HUGE open plan living of 766 sq.ft
- Town centre location, 5 mins to station
- Large private winter balcony plus Juliet
- Long lease with 2 years NHBC warranty
- EXCELLENT condition, newly decorated
- Only £827 service charge, no ground rent
- No onward chain
- EPC rating B

Description

*** SOLD WITHIN 14 DAYS - SIMILAR PROPERTIES URGENTLY REQUIRED ***
Commuters delight! Have an abundance of space with the massive 27.3 feet long kitchen/lounge.

Stunning two bedroom apartment in modern town centre development in the heart of Slough which is benefiting from massive regeneration, including a new library, shopping centre, offices and hotels. Located on the High Street and a short stone's throw from the train station (Crossrail in 2019). The property has full double glazing, gas central heating radiators and gas hob cooker. Recently fully refurbished with brand new carpets

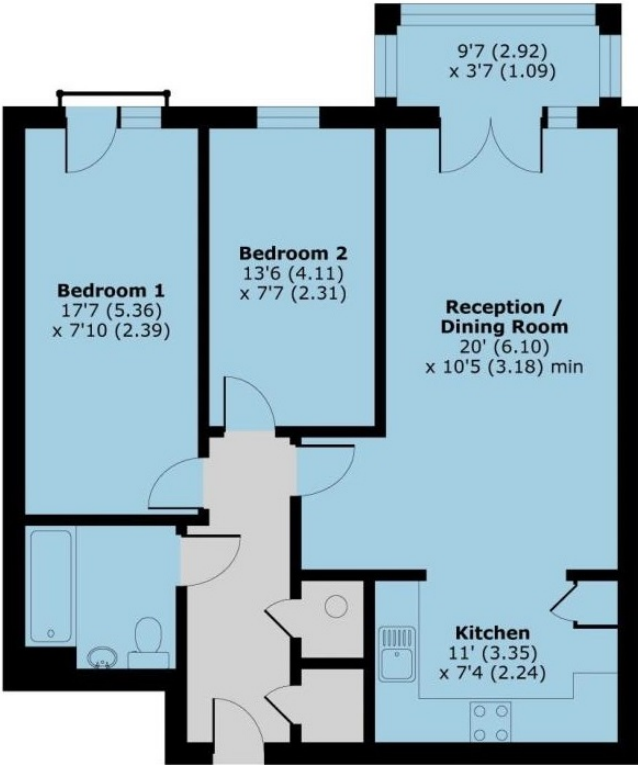


payments whatsoever.

**Special one of a
*Priced to sell and

*** VIEWINGS AV

BOOK YOUR VIE



Approx. Gross Internal Floor Area
766 Sq Ft 71.1 Sq Metres